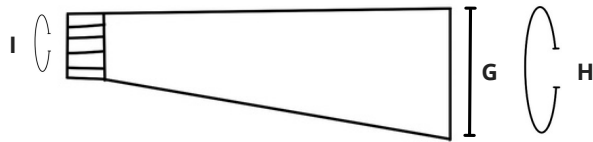


SIZING

Refer to the schematic and table to the right to see the **garment measurements** for each size. You can choose any body size and any sleeve size and use them together.

Measurement F is 26" / 65cm for all sizes, and can be adjusted. All sleeves are 17" / 42.5cm long, but can be adjusted. Instructions are included in the pattern. Note: H is double G; it is omitted here for formatting reasons.



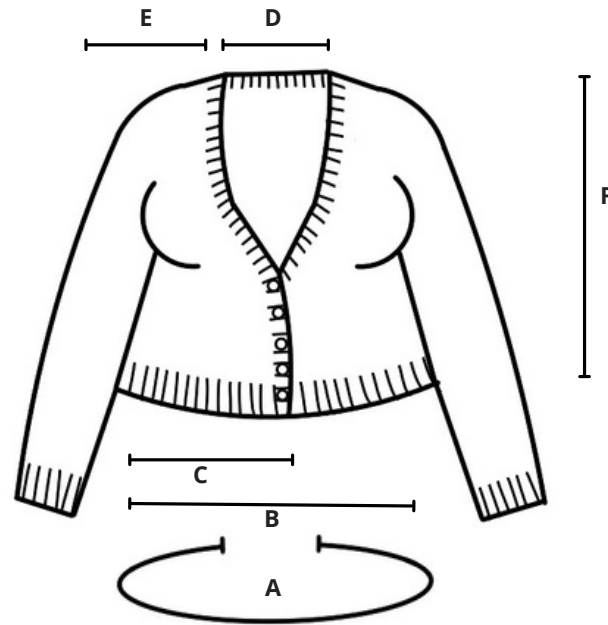
SLEEVE SIZE CHART

Size	G	I
A	5.25" / 13.0cm	7.75" / 19.5cm
B	6.25" / 15.5cm	9.75" / 24.5cm
C	7.25" / 18.0cm	9.75" / 24.5cm
D	8.50" / 21.5cm	9.75" / 24.5cm
E	9.75" / 24.5cm	12.00" / 30.0cm
F	10.50" / 26.5cm	12.00" / 30.0cm
G	12.25" / 30.5cm	12.00" / 30.0cm
H	13.75" / 34.5cm	12.00" / 30.0cm
I	15.25" / 38.0cm	14.25" / 35.5cm
J	16.25" / 40.5cm	14.25" / 35.5cm

BODY SIZE CHART

Size	A	B	C	D	E
1	33.00" / 82.5cm	15.75" / 49.5cm	9.25" / 23.0cm	4.50" / 11.5cm	6.00" / 15.0cm
2	37.50" / 94.0cm	18.00" / 45.0cm	10.25" / 25.5cm	4.50" / 11.5cm	7.00" / 17.5cm
3	42.00" / 105.0cm	20.25" / 50.5cm	11.25" / 28.0cm	4.50" / 11.5cm	8.25" / 20.5cm
4	46.25" / 115.5cm	22.25" / 55.5cm	12.50" / 31.5cm	4.50" / 11.5cm	9.25" / 23.0cm
5	50.50" / 126.5cm	24.50" / 61.5cm	13.50" / 34.0cm	4.50" / 11.5cm	10.25" / 25.5cm
6	55.00" / 137.5cm	26.75" / 67.0cm	14.75" / 37.0cm	6.50" / 16.5cm	10.25" / 25.5cm
7	59.50" / 149.0cm	29.00" / 72.5cm	15.75" / 39.5cm	6.50" / 16.5cm	11.50" / 29.0cm
8	63.75" / 159.5cm	31.00" / 77.5cm	16.75" / 42.0cm	8.75" / 22.0cm	11.50" / 29.0cm
9	68.00" / 170.0cm	33.25" / 83.0cm	18.00" / 45.0cm	8.75" / 22.0cm	12.50" / 31.5cm
10	72.50" / 181.5cm	35.50" / 89.0cm	19.00" / 47.5cm	8.75" / 22.0cm	13.75" / 34.5cm

Solitary



- A:** chest / waist (circumference)
- B:** back width (flat)
- C:** front panel width (flat, each)
- D:** neck opening (flat)
- E:** neck to shoulder (flat)
- F:** total length (adjustable)

E A S E

Recommended positive ease:

Bust: approx. 3-8" / 7.5-20cm
 Bicep: approx. 2-8" / 5-20cm

YARN REQUIREMENTS (YARDS)

Solitary

YARN REQUIREMENTS

Yarn weight: DK

Gauge: 22 stitches & 27.5 rows = 4" / 10cm in lace

The table opposite shows the yarn requirement for each body and sleeve size combination.

You will need to adjust this number if you make any modifications - see below.

ADJUSTING BODY LENGTH

Each pattern repeat is approximately 2.75" / 7cm high.

Each pattern repeat above the shaping uses approximately 69 (80, 91, 102) [113, 119, 130] (135, 146, 156) yards.

Each pattern repeat below the shaping uses approximately 80 (91, 102, 113) [124, 135, 146] (156, 167, 178) yards.

There is also a marginal adjustment to the neckband, at 6 yards per pattern repeat.

YARDS

Sleeve Size

	A	B	C	D	E	F	G	H	I	J
1	945	1009	1033	1053	1123	1151	1167	1163	1225	1269
2	1126	1190	1214	1234	1304	1332	1348	1344	1406	1450
3	1221	1285	1309	1329	1399	1427	1443	1439	1501	1545
4	1311	1375	1399	1419	1489	1517	1533	1529	1591	1635
5	1392	1456	1480	1500	1570	1598	1614	1610	1672	1716
6	1483	1547	1571	1591	1661	1689	1705	1701	1763	1807
7	1569	1633	1657	1677	1747	1775	1791	1787	1849	1893
8	1660	1724	1748	1768	1838	1866	1882	1878	1940	1984
9	1752	1816	1840	1860	1930	1958	1974	1970	2032	2076
10	1856	1909	1933	1953	2023	2051	2067	2063	2125	2169

Body Size

EXAMPLE

Sample B, size 6F, was adjusted to be shorter by omitting a pattern repeat above the shaping.

The yardage requirement for size 6F is 1689 yards.

The yardage requirement for an above-shaping pattern repeat for size 6 is 119 yards.

1689y (original requirement) - 119y (one above-shaping pattern repeat) = 1570y (new requirement).

YARN REQUIREMENTS (METRES)

Solitary

YARN REQUIREMENTS

Yarn weight: DK

Gauge: 22 stitches & 27.5 rows = 4" / 10cm in lace

The table opposite shows the yarn requirement for each body and sleeve size combination.

You will need to adjust this number if you make any modifications - see below.

ADJUSTING BODY LENGTH

Each pattern repeat is approximately 2.75" / 7cm high.

Each pattern repeat above the shaping uses approximately 63 (73, 83, 93) [103, 108, 118] (123, 133, 142) metres.

Each pattern repeat below the shaping uses approximately 73 (83, 93, 103) [113, 123, 133] (142, 152, 162) metres.

There is also a marginal adjustment to the neckband, at 5 yards per pattern repeat.

YARDS

Sleeve Size

	A	B	C	D	E	F	G	H	I	J
1	864	923	945	963	1027	1053	1067	1064	1120	1160
2	1030	1088	1110	1128	1192	1218	1233	1229	1286	1326
3	1117	1175	1197	1215	1279	1305	1320	1316	1373	1413
4	1199	1257	1279	1298	1362	1387	1402	1398	1455	1495
5	1273	1331	1353	1372	1436	1461	1476	1472	1529	1569
6	1356	1415	1437	1455	1519	1544	1559	1555	1612	1652
7	1435	1493	1515	1533	1597	1623	1638	1634	1691	1731
8	1518	1576	1598	1617	1681	1706	1721	1717	1774	1814
9	1602	1660	1682	1701	1765	1790	1805	1801	1858	1898
10	1687	1745	1767	1786	1850	1875	1890	1886	1943	1983

Body Size

EXAMPLE

Sample B, size 6F, was adjusted to be shorter by omitting a pattern repeat above the shaping.

The metreage requirement for size 6F is 1544 metres.

The metreage requirement for an above-shaping pattern repeat for size 6 is 108 metres.

1544m (original requirement) - 108m (one above-shaping pattern repeat) = 1436m (new requirement).

SWATCH GUIDE - WRITTEN

Solitary

WRITTEN INSTRUCTIONS

Cast on a multiple of 12 + 9 stitches.

Row 1 (RS): k6, [p3, k3] to last 3 st, k3

Row 2: [k3, p3] to last 3 st, k3

Rows 3-4: Repeat rows 1-2

Row 5: k7, yo, k2, cdd, [k2, yo, k5, yo, k2, cdd] to last 9 st, k2, yo, k to end

Row 6, and all WS rows until end of lace:

k3, p to last 3 st, k3

Row 7: k6, yo, k2, ssk, k1, [k2tog, k2, yo, k3, yo, k2, ssk, k1] to last 10 st, k2tog, k2, yo, k to end

Row 9: k5, yo, k2, ssk, k2, [k1, k2tog, k2, yo, k1, yo, k2, ssk, k2] to last 10 st, k1, k2tog, k2, yo, k to end

Row 11: k6, yo, k2, ssk, k1, [k2tog, k2, yo, k3, yo, k2, ssk, k1] to last 10 st, k2tog, k2, yo, k to end

Row 13: k7, yo, k2, cdd, [k2, yo, k5, yo, k2, cdd] to last 9 st, k2, yo, k to end

Row 15: k4, ssk, k2, yo, k3, [k2, yo, k2, cdd, k2, yo, k3] to last 10 st, k2, yo, k2, k2tog, k to end

Row 17: k5, k2tog, k2, yo, k2, [k1, yo, k2, ssk, k1, k2tog, k2, yo, k2] to last 10 st, k1, yo, k2, ssk, k to end

Row 19: k6, k2tog, k2, yo, k1, [yo, k2, ssk, k3, k2tog, k2, yo, k1] to last 10 st, yo, k2, ssk, k to end

Row 21: k5, k2tog, k2, yo, k2, [k1, yo, k2, ssk, k1, k2tog, k2, yo, k2] to last 10 st, k1, yo, k2, ssk, k to end

Row 23: k4, ssk, k2, yo, k3, [k2, yo, k2, cdd, k2, yo, k3] to last 10 st, k2, yo, k2, ssk, k to end

Row 24: k3, p to last 3 st, k3

Rows 25-28: Repeat rows 1-2 twice

GAUGE

Yarn weight: DK

Needles: 4mm (adjust as required to achieve gauge)

Gauge: 22 stitches & 27.5 rows = 4" / 10cm in lace

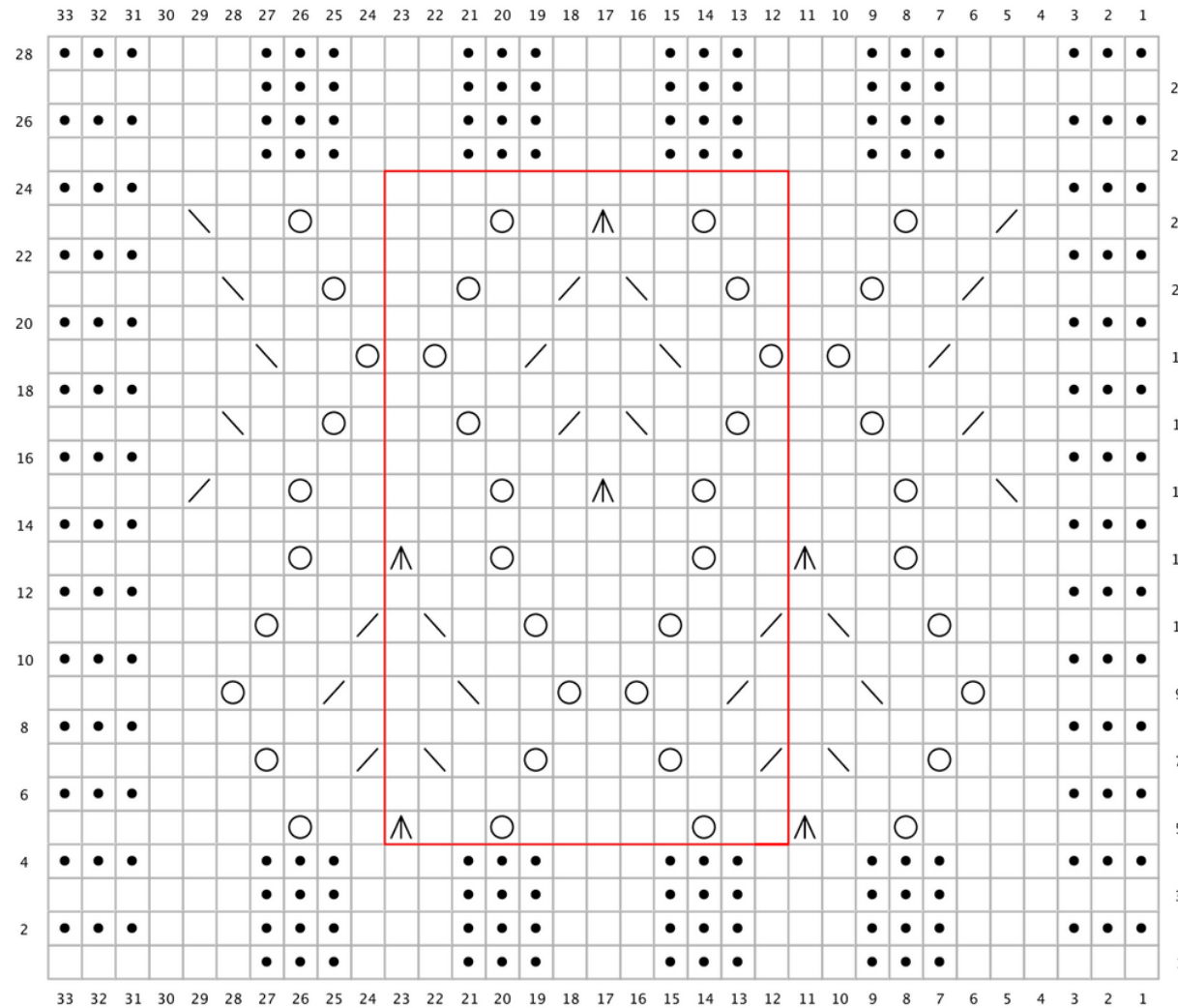
It can be easier to measure a pattern repeat rather than counting individual stitches when swatching lace.

One repeat of the lace pattern (as outlined in red on the chart on the next page) should measure approximately 2.25" / 5.5cm wide and 2.75" / 7cm high.

SWATCH GUIDE - CHARTED

Solitary

CHART



Key

- RS: knit
WS: purl
- yo
- ^ RS: central double decrease
WS: central double decrease purl
- / RS: k2tog
WS: p2tog
- \ RS: ssk
WS: ssp
- RS: purl
WS: knit
- lace repeat

GAUGE

Yarn weight: DK
 Needles: 4mm (adjust as required to achieve gauge)
 Gauge: 22 stitches & 27.5 rows = 4" / 10cm in lace